



Dartfish Incorporated at the Mayo Clinic Sports Medicine Center



The Mayo Clinic is a nonprofit worldwide leader in medical care, research, and education providing specialized care for people from all walks of life. **The Mayo Clinic Sports Medicine Center** provides an expert and comprehensive team of specialists whose collaborative mission is to *help you achieve your full potential, serving athletes of all levels and ages by providing comprehensive, individualized programs*. To further this goal to best serve each client, the Mayo Clinic Sports Medicine Center has incorporated Dartfish Technology at their Rochester, Minnesota campus.

Performance Solutions - Optimize your Body. Elevate your Performance.



Whether you're shooting for Olympic Gold, a team championship, a personal best, or just want to learn proper for when you take up a new sport, the Mayo Clinic Sports Medicine Center can help you achieve your goals. Their team of doctors, psychologists, researchers, trainers, nutritionists and coaches have decades of experience helping elite and professional athletes, weekend warriors, and youth athletes maximize their potential. Whatever your skill level, in their state-of-the-art facility, you'll experience sports programs that leverage insights from Mayo Clinic's medical experience and research to improve every aspect of your performance.



Dartfish Incorporated at the Mayo Clinic Sports Medicine Center



Clinical Services - Physical Therapy

A sports injury can happen in an instant, or from repetitive action over time. An old injury can flare up, and can't be ignored. When you worry that your athletic career, your Olympic dream, or the simple joy you get from everyday activities could be over, you want the best and most advanced care available. You want a comprehensive team: a complete team of surgeons, specialists and therapists who are at the top of their game, who work together to return you to the top of your game. Using video feedback powered by Dartfish, clinical staff can track your recovery throughout your rehabilitation process. Physical therapists work with you to help you recover

flexibility, regain range-of-motion and strength, and build aerobic fitness, processes enhanced with use of Dartfish Video Technology. Focusing on your individual needs, our physical therapists gradually help you work up to specific goals for increased function. At the same time, they provide education on things like proper gait, lifting techniques, and posture. Most importantly, our experts help you learn proper body mechanics to prevent future injury.



Advanced Analysis and Training Systems

The Mayo Clinic Sports Medicine Center is equipped with advanced 2-D Dartfish Video Technology and 3-D computerized motion analysis systems to analyze a range of sports specific skills such as a runner's gait, a golfer's swing, a pitcher's throw, or a skater's stride.

Mayo's highly trained staff uses Dartfish Video Solutions, including Dartfish ProSuite Software, a customized camera solution and Dartfish TV to provide video feedback for athletes training in various disciplines, including running, baseball, golf, hockey, tennis, basketball and lacrosse.





Dartfish Incorporated at the Mayo Clinic Sports Medicine Center



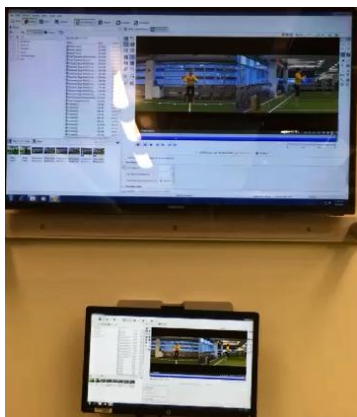
Top-of-the-Line Equipment Integrated with Dartfish

Athletes train with top-of-the-line fitness equipment integrated with Dartfish to build strength, stamina and agility, and improve balance, flexibility, and stability.



They also have access to specialized lifting platforms for learning and practicing new skills and techniques, safely. Additionally, multiple playing surfaces – wood for basketball and volleyball, artificial grass for turf sports, synthetic ice for hockey – create an ideal environment for athletes from a range of sports, to achieve their peak performance level.

The Mayo Clinic Sports Medicine Center includes a Woodway skating treadmill, pictured above, with cameras prepared for capture and then analysis with Dartfish.



Interested in a similar infusion of Dartfish in your facility or program? Please contact us at 1.888.655.3850 / info@dartfish.com

